



Triumph Riders Club SA – Hills Ride

Join the friendly crew of the Triumph Riders Club of South Australia (TRC) for a social ride through the motorcycling wonderland that is Adelaide Hills.



Meet us on Hawthorn Crescent, next to Hazelwood Park Reserve in Hazelwood Park. Here we will have a pre-ride briefing, and you can collect your Festival goodie bags. Come early and take your time to view all the fine machinery belonging to the riders, say hello and meet some other local riders.

We'll climb into the Hills via Greenhill road and continue our ride through select twists and turns for about 45 minutes or so before taking a break. Morning tea will be in Lobethal, you'll have about 30 minutes to get yourself a drink and something to eat from any of the local cafes as you please.



From there we'll continue through the Hills and more choice South Aussie roads to the National Motor Museum at Birdwood. Here you can help yourself to lunch, once again from any of the local cafes and enjoy a visit to the museum.

When you register for the ride please indicate whether you will attend the museum.

We hope to see you there, it's always a great day when you're riding the Hills!



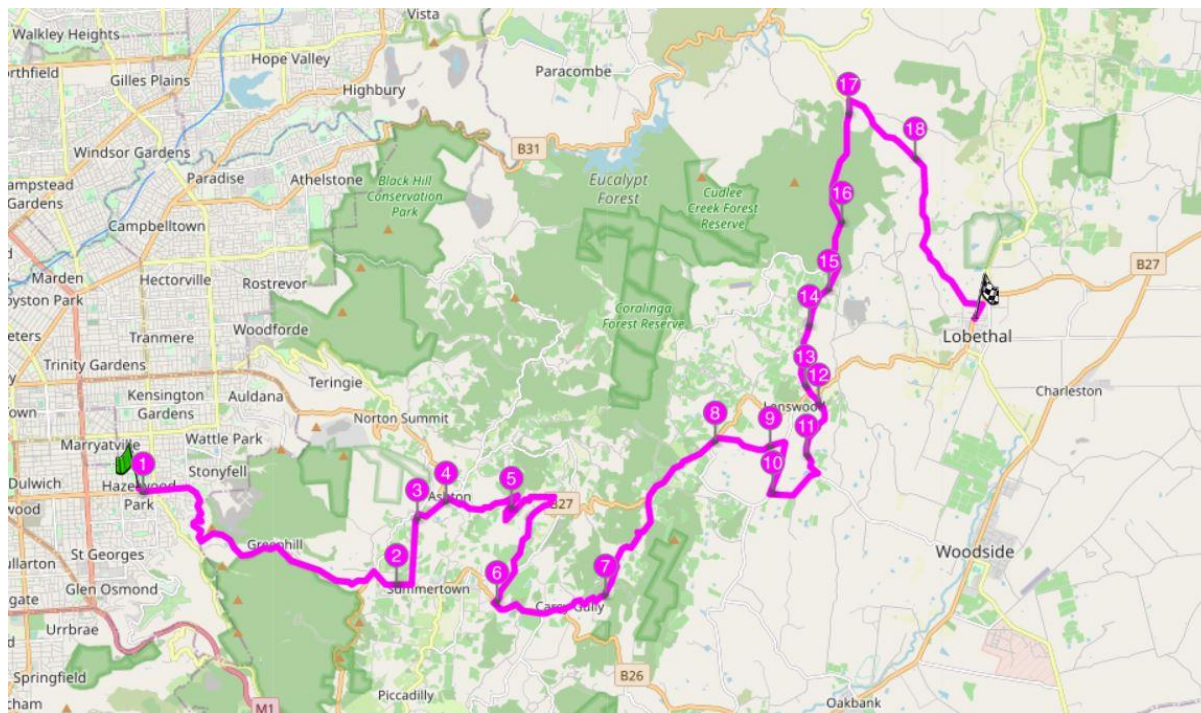
Triumph Riders Club of SA – Hills Ride Route

The first half of the ride is about 50km and will take about an hour. We'll be riding straight up Greenhill Road from the meeting point at Hazelwood Park. The leader will wait (map 1. point 2) for everybody to form up again just outside of Summertown. That way we can stay together as we enjoy the twists and turns of the Adelaide Hills.

From there we will head down to one of the other classic motorcycling roads, Lobethal Road (point 4), before turning onto Deviation Road and back to Greenhill Road (point 6). From there we'll take a mix of back roads and classics to have smoko in Lobethal.

We'll park by the Lobethal Bakery and break for 30 minutes. Grab a coffee and a bite to eat from any one of the local establishments. Be ready to get going again in 30 minutes.

Map 1 – Hazelwood Park to Lobethal



After smoko we'll make our way to the National Motor Museum at Birdwood, via a circuitous and enjoyable motorcycling route. The distance is about 45km and should take under an hour.

We'll make our way initially from Lobethal out toward Gumeracha and then toward Forreston, turning off to ride over Checker Hill on the Checker Hill Road (map 2. point 3). Then through Kersbrook, turning off the main road again to wind back to the Forreston Road. We'll then cruise through the scenic Mount Crawford Forest area to Birdwood. We'll be parking on the grounds of the museum entering from the back. So please follow the leader and corner marshalls all the way. Grab yourself something to eat at any of the local establishments and enjoy the museum at your leisure. You can make your own way home whenever it suits you.

Entry to the museum is included in your registration. Total distance for the ride is just under 100km. Please let your leader know if range is an issue, so allowances can be made.

We will be using a corner marshalling system to keep the group together. This means that if you are immediately behind the leader approaching a turn off you must look for his/her hand signal. The leader will point to the side of the road, you should stop safely at that position and keep your indicator on in the direction the leader went. As other riders approach from behind, point in the direction the leader went, as well as keeping your indicator on. It is important that you do this until the Tail End Charlie collects you.

Generally, when riding in the group stay behind the leader and ahead of the Tail End Charlie. It is also important to stay on the road you are on until you see a Corner Marshal.

Above all ride safely!

Map 2 – Lobethal to Birdwood

